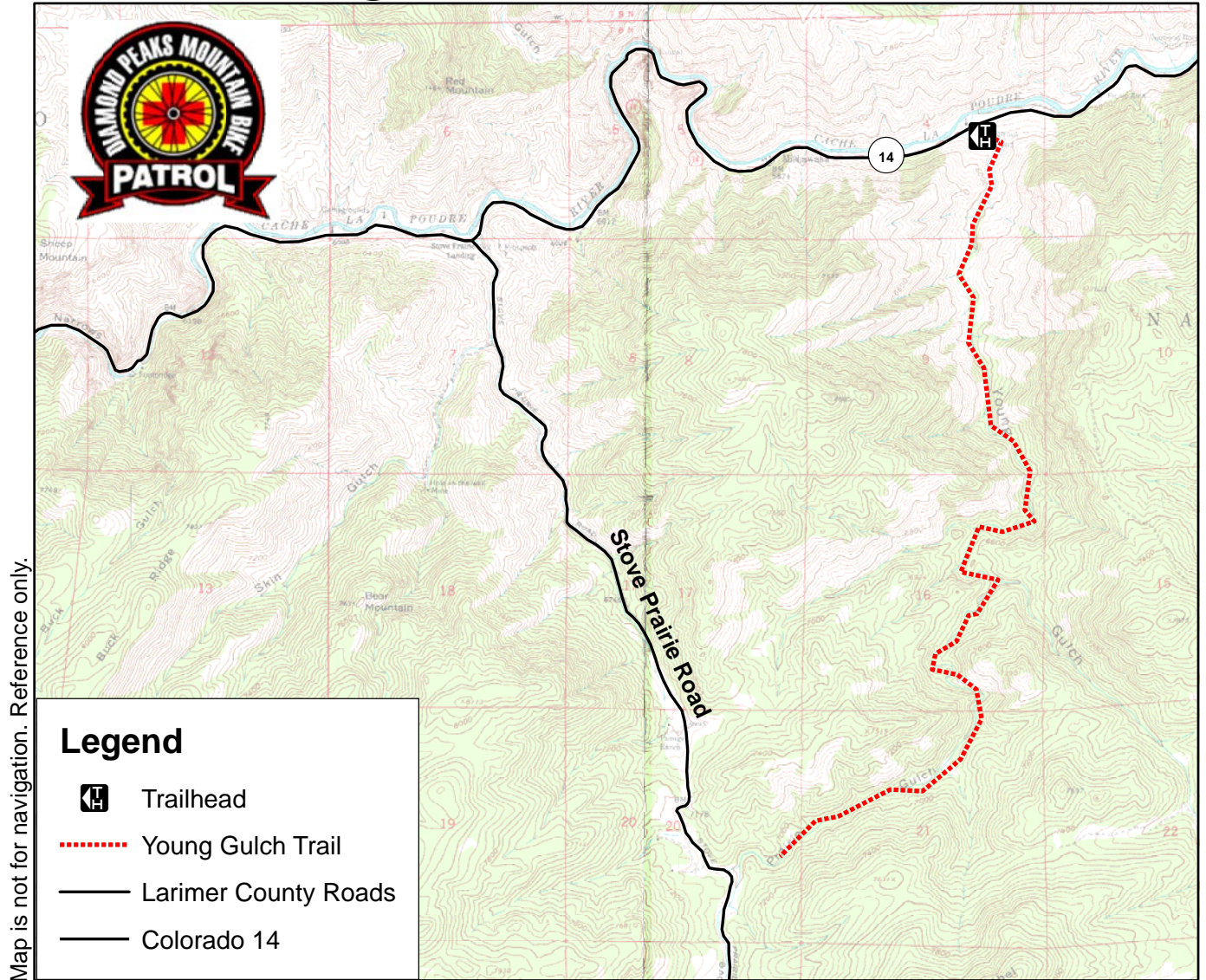


Young Gulch Trail-USFS



Map is not for navigation. Reference only.



Trailhead Location:

Travel 11 miles northwest of Fort Collins on U.S. Highway 287 and Colorado Highway 14. Turn left on CO 14, and travel 13.2 miles up the Poudre Canyon. Turn left on the short dirt road leading to the parking lot and trailhead.

Trail Information:

This trail is very popular with hikers and mountain bikers. There are several stream crossings on the lower part of the trail.

Special Trail Regulations:

There is no camping within 1/4 mile of the trail for the first two miles. Private property separates the end of the trail from Stove Prairie Road.

Topographic Maps:

Big Narrow, Crystal Mountain, Poudre Park

