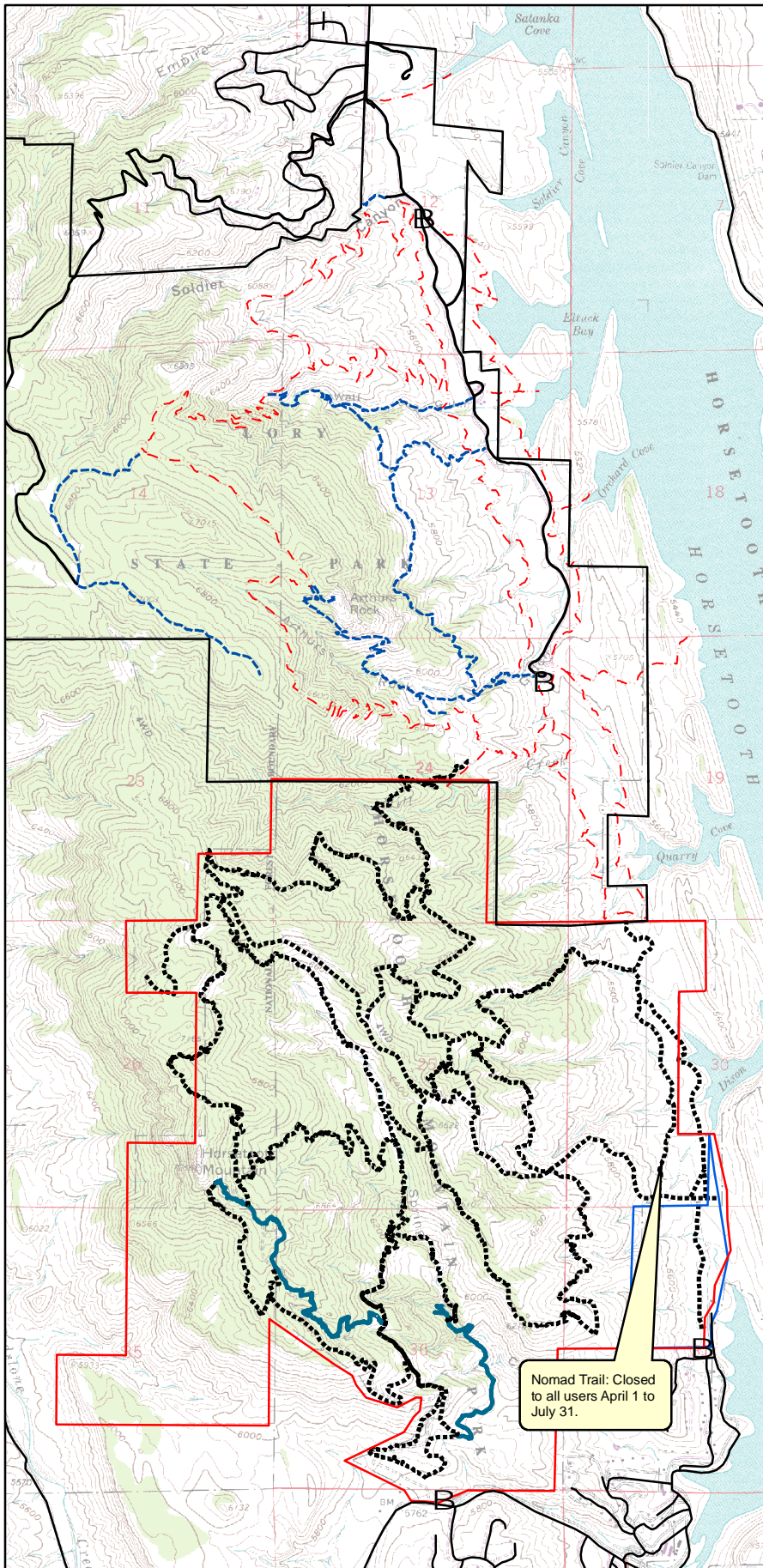


Lory State Park and Horsetooth Mountain Park

Map is not for navigation. Reference only



Legend

- Trailheads
- Lory State Park Boundary

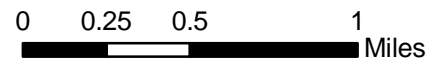
Lory Trail Designation

- Hiking Only
- Shared-Use

- Horsetooth Mountain Park
- Soderberg Open Space

Horsetooth Mountain Bike Trails

- Not Permitted
- Permitted



Trailhead Location:

Lory State Park-Take
 U.S. 287 north from Ft. Collins to LaPorte, then turn left onto CR52E. In Bellvue turn left on CR23. Continue 1.4 miles and turn a right on CR25G. Drive another 1.6 miles to the park entrance. Park either at the Timber Trailhead, first right past Visitor Center, or continue to end of road and Arthur's Rock Trailhead.

Horsetooth Mountain Park- From Fort Collins, follow Harmony Road west to Taft Hill Road. Continue west on now CR38E 6.5 miles to the main trailhead parking lot. To access the Soderberg Trailhead, turn right onto Shoreline Dr. at approximately 6 miles west of Taft Hill Rd.

Trail Information:

Heavily used parks close to Fort Collins and Loveland. Multiple trail ride options. Both parks offer night riding. Daily passes are valid in each park. Lory State Park visitors with a valid daily or annual pass are permitted to use Horsetooth Mountain Park. Lory State Park honors valid Horsetooth passes.

Special Regulations:

Both parks restrict mountain bike use on specific trails. Get a more detailed trail map at the trailhead.

Topographic Map:
 Horsetooth Reservoir

