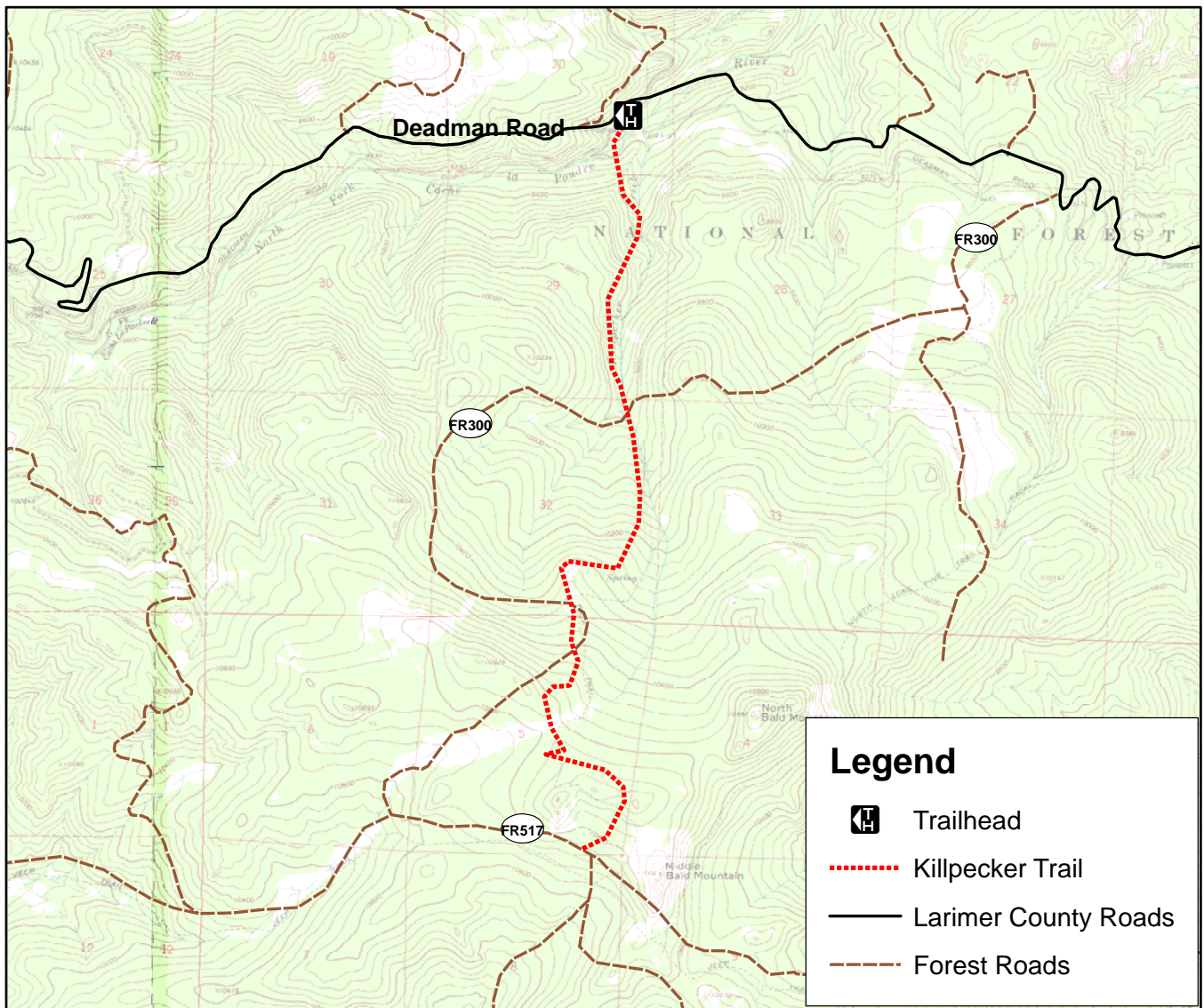


# Killpecker Trail-USFS



Map is not for navigation. Reference only

## Trailhead Location:

From Fort Collins take Highway 287 north to Ted's place (corner of Hwy 14 and US287). Continue north on US287 for 11 miles. Turn left onto CR74E at the Forks. Follow CR74E for 31.5 miles (the road becomes gravel just past the village of Redfeather Lakes). The trailhead is on the south side of road right across from the North Fork of the Poudre Campground.



## Trail Information:

The trail ascends steep and rocky from the trailhead. The trail can be more enjoyable to ride back 2 miles Deadman Road to FR300 for a moderate climb.

## Topographic Maps:

Deadman, South Bald Mountain

