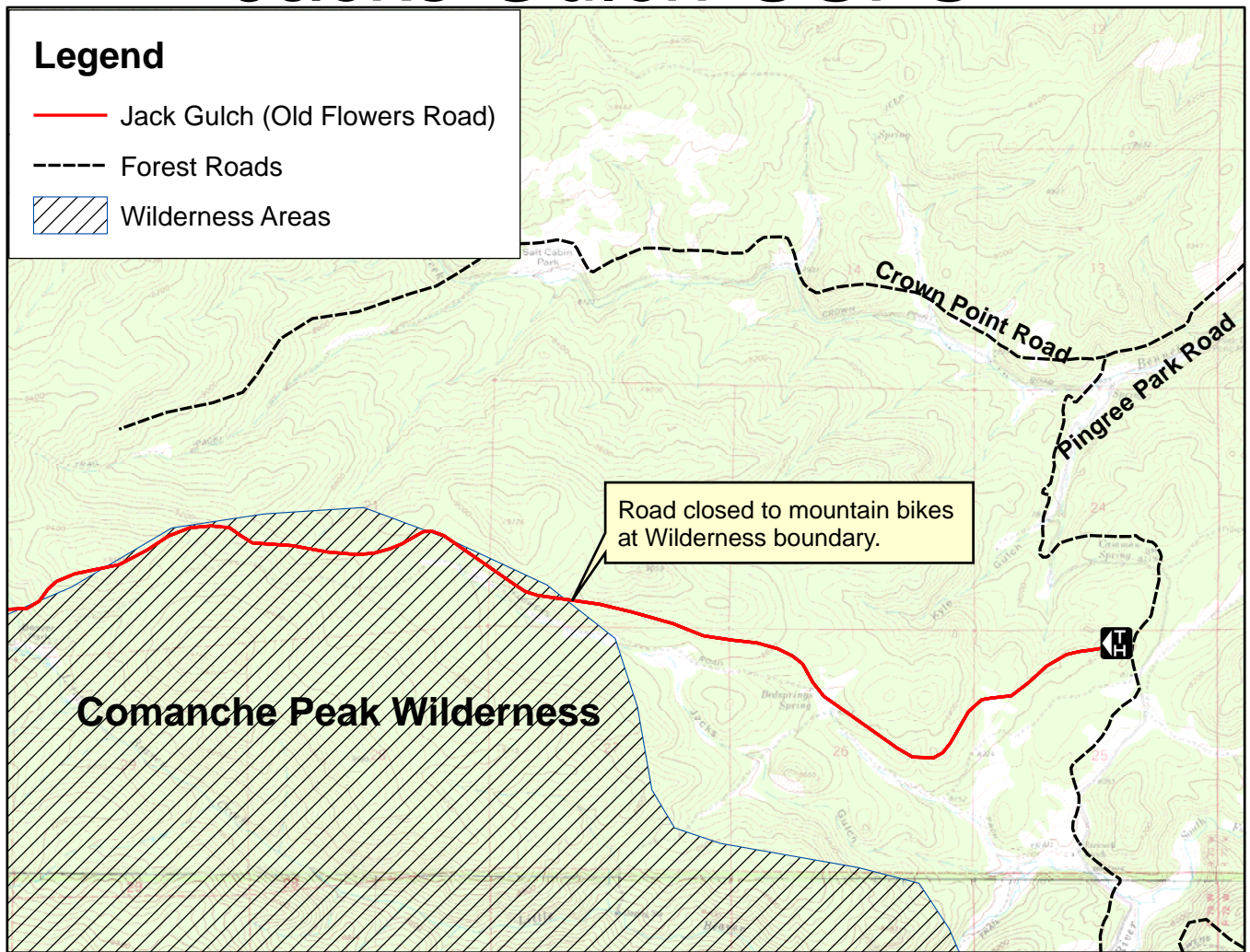


Jacks Gulch-USFS



Map is not for navigation. Reference only.

Trailhead Location:

Travel 11 miles northwest of Fort Collins on U.S.Highway 287 and Colorado Highway 14. Turn left on CO 14, travel 26.9 miles, and turn left on County Road 63E, Pingree Park Road. Travel 6 miles to Jacks Gulch Campground. The campground will lead to the Flowers Trailhead.

Trail Information:

This former wagon route enters the Comanche Peak Wilderness. This trail is actually a portion of Old Flowers Road. Mountain bikes are not permitted in the Wilderness.

Topographic Maps:

Pingree Park, Rustic

