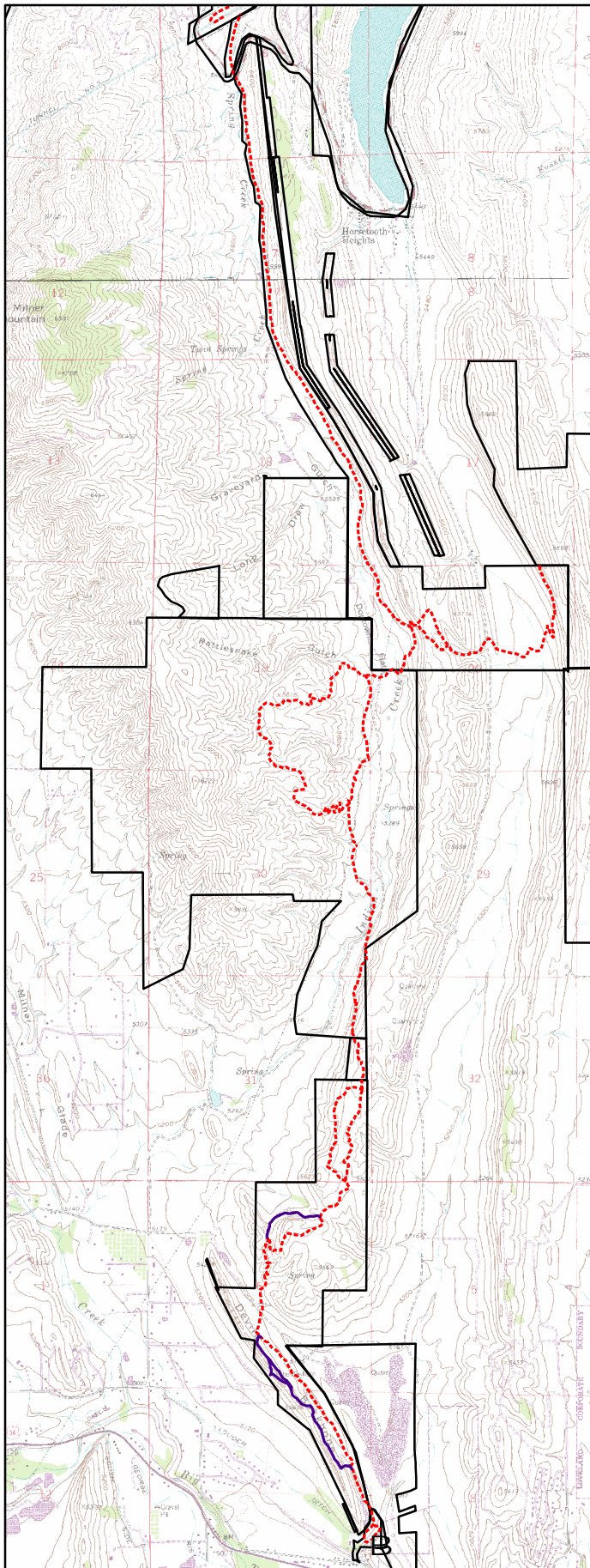


Devil's Backbone Openspace



Map is not for navigation. Reference only

Legend

B Trailhead

Devil's Backbone Bike Trails

— Not Permitted

- - - Permitted

▭ Open Lands Boundaries

0 0.5 1 2 Miles

Trailhead Location:

Soderberg Trailhead (not shown)-From Fort Collins, follow Harmony Road west to Taft Hill Road. Continue west on now CR38E 6 miles to Shoreline Dr. Turn right and follow to trailhead.

Devil's Backbone Trailhead- From Loveland follow US 34 west west of Loveland to just past mile marker #88 (4 miles west of the K-Mart). Turn right (north) onto Hidden Valley Drive just east of the old water tank. The trailhead is on your left.

Trail Information:

Multiple trail ride options exist in this network of Larimer County open space parcels. Areas are closed at dusk.

Highly rocky trail located closer to Devil's Backbone Trailhead.

Special Regulations:

The western section of both the Wild and Hunter loops is closed to mountain bikes. Both portions of the Laughing Horse Loop are open to bicycles.

Topographic Map:

Horsetooth Reservoir, Masonville

